



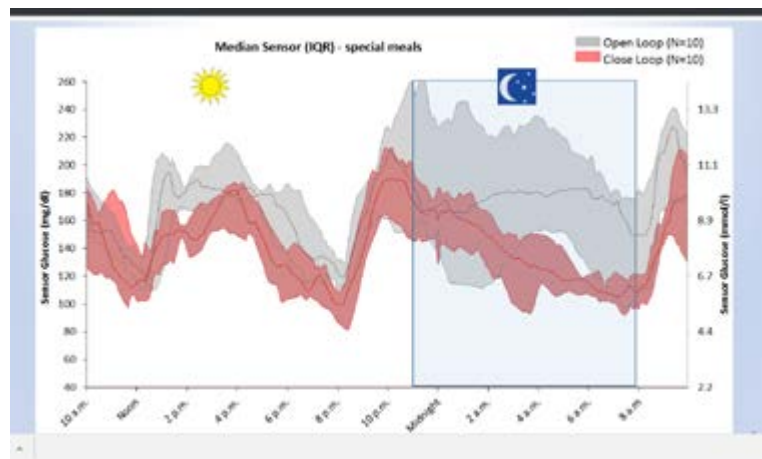
Alida Taniwallova

Amina Hospital Ajman, UAE

Continuous subcutaneous insulin infusion and glucose monitoring

4²⁵ million adults have diabetes and 1 in 2 remains undiagnosed. Over 1 million children and adolescents have type 1 diabetes. Sensor-augmented insulin pump in conjunction with a CGM device to give the patient more information about their blood glucose levels and allow them to make better informed decisions about insulin dosing. It can

be used by type 1 and type 2 diabetes patients. The BOLUS WIZARD CALCULATOR is a feature in the pump. Artificial pancreas; automated close-loop system is available and prevents diabetic patients from glucose variation and diabetic complications.



Biography

Alida Taniwallova has graduated from Comenius University in Slovakia and received Postdoctoral Studies in Endocrinology and Diabetology from reputed Charles University in Prague. She has been working in various hospitals in UAE since 2012. She has published more than 25 papers in reputed journals and has actively participated in international conferences.

alida.taniwallova@gmail.com