

Supplementary File
Journal of Medical Toxicology Research
SciTechnol

Figures:

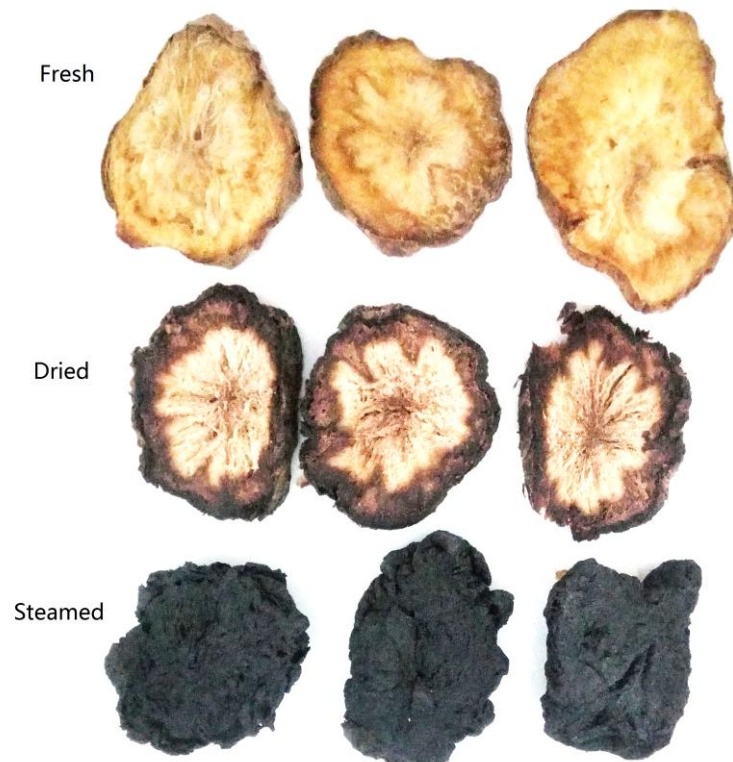


Figure S1. Typical samples of FRR, DRR and SRR. About one third of the fresh tuberous roots were cut into slices (3mm thick) and dried at 30°C (used as FRR). The other fresh roots were hot-air dried at 80°C and one half of them were cut into slices and used as DRR. The other half of dried roots were further steamed for 48h at atmospheric pressure and then dried at 80°C, which were cut into slices and used as SRR.

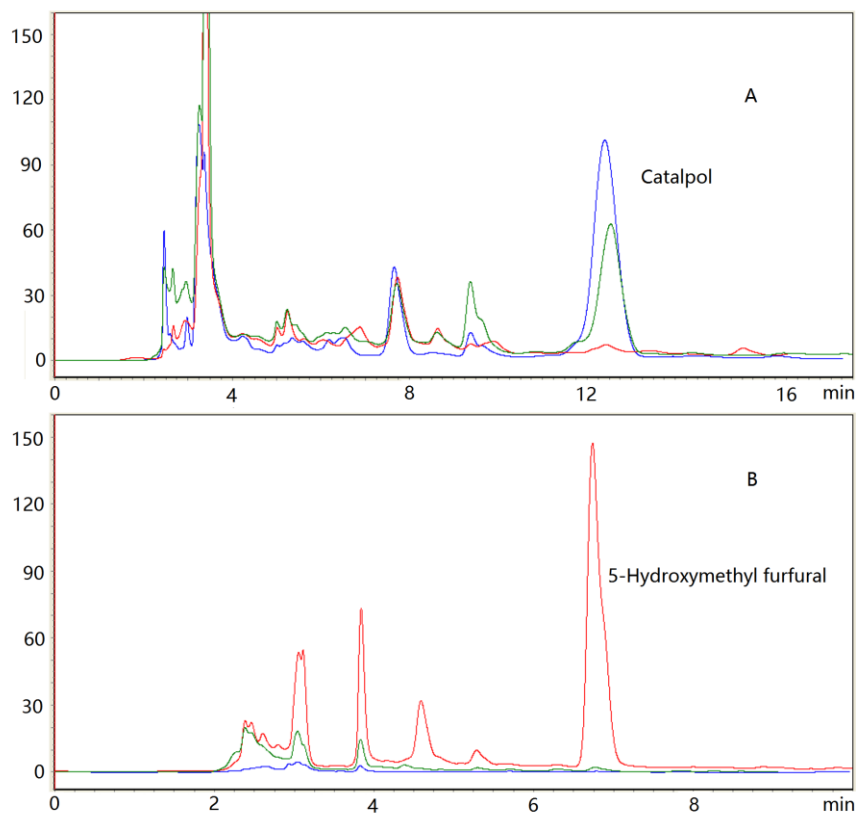


Figure S2. Typical HPLC chromatograms of FRR, DRR and SRR (blue, green and red lines, respectively) for determinations of catalpol (A) and 5-hydroxymethyl furfural (B). The samples were separated by a Luna C₁₈ column (Phenomenex Inc., Torrance, CA, USA). Catalpol was detected at 210 nm with 0.1% phosphoric acid solution and acetonitrile (1%) as the mobile phase, and 5-hydroxymethyl furfural was detected at 284 nm with 0.1% phosphoric acid solution and acetonitrile (10%) as the mobile phase.